



TOWN OF SWAMPSCOTT

Elihu Thomson Administration Building
22 Monument Avenue
Swampscott, MA 01907-1940

M. Ronald Mendes, Esq.
Treasurer/Collector/Parking Clerk

TRAFFIC STUDY ADVISORY COMMITTEE

MEETING TUESDAY SEPTEMBER 6, 2016 @ 10:00AM

SELECTMENS' MEETING ROOM
1ST FLOOR, 22 MONUMENT AVE.

TOWN CLERK
TOWN OF SWAMPSCOTT

AUG 31 2016

RECEIVED

AGENDA:

1. Request for "Drive Slow" signage on Beach Ave.
2. Review of Shepard Ave./Phillips Beach parking
3. Request of Disability Commission and Community Development Director to add several Handicap Spaces on Humphrey Street.

Ronald Mendes

From: Gary Lord
Sent: Monday, August 22, 2016 4:25 PM
To: Emily Vazquez
Cc: Ronald Mendes; Maureen Shultz
Subject: RE: Posting of Traffic Warning Signs

Hi Mrs. Vazquez-----I will forward your request to the traffic study committee and you will be notified when it is scheduled for an upcoming meeting.

Regards,
Lt. Gary Lord.

From: Emily Vazquez [mailto:evazquez@nevillecenter.org]
Sent: Friday, August 12, 2016 9:59 AM
To: Gary Lord
Subject: Posting of Traffic Warning Signs

Hello Mr. Lord,

According to the Swampscott Police website you are the person to contact regarding traffic issues. Please do let me know if I have reached you in error and in that event, please kindly refer me to the correct department. I am writing to learn about the process for requesting a traffic warning sign to be posted in my neighborhood. I live on Beach Ave right at the top of the hill. Many people speed up and down the street without realizing that it is difficult to see them approaching due to the hill. In March of last year our dog was hit and killed by a teenager who was speeding down the street. Typically, when our children are playing in the front yard we place a fluorescent green Step2 Kid Alert on the sidewalk. However, we have been told by officers that it cannot protrude out into the road so it fails to deter speeding due to sheer lack of visibility.

I am writing to determine if the town of Swampscott or if I myself could post official signs to encourage slower speeds. There are over 30 children that live on our street which is less than a quarter mile long. I have seen many other neighborhoods with signs that say "Drive like your children live here" or "Drive Slowly we love our children". There are also diamond shaped fluorescent yellow warning signs with the word children on them. We have one such sign at the bottom of our street but again, it is not highly visible and is rarely heeded. I am more than willing to purchase the sign myself but want official approval before posting it.

Please let me know how to proceed. I appreciate any input you may have.

Best,

Emily Vazquez, Esq.
General Counsel
Neville Center at Fresh Pond
640 Concord Ave
Cambridge, MA 02138
p. 617-497-0600
f. 617-864-0415

Ronald Mendes

From: Dave Castellarin
Sent: Sunday, August 14, 2016 1:32 PM
To: Ronald Mendes
Subject: Fwd: parking

FYI

Sent from my iPhone

Begin forwarded message:

From: <levensons@comcast.net>
Date: August 14, 2016 at 1:06:27 PM EDT
To: Dave Castellarin <davec@town.swampscott.ma.us>
Subject: parking

David

We are writing to you and hope you will share this with the rest of the Traffic Study Committee. There has not been one weekend when cars are not parked all the way to the edge of the driveway, sometime overlapping, and in front of the house. The signs are not working. Right now there are cars parked all the way to the driveway and across the street is completely open. We said we would revisit this to see if it worked and we would like to know when. My neighbors next door at 57 Shepard would also like it to return to the no parking May 1 through October. We would also take that over the no parking anytime that we originally requested.

Please let us know when it will be on the agenda. Thanks.

Sheryl and Paul

Parking Clerk

From: Lisa Dudley <lisadudley586@msn.com>
Sent: Tuesday, August 23, 2016 3:29 PM
To: Parking Clerk
Subject: Roy St.

Hello,

I was wondering if there are parking regulations on Roy Street? It is a very narrow side street and cars are parked on both sides of the street, some are parked on what is supposed to be a sidewalk. Also, cars are parked where the owners do not live at the property, but yet they park there and are very close to my driveway making it difficult to get in and out of my driveway and obstruct my view.

Ronald Mendes

From: Pete Kane
Sent: Thursday, August 18, 2016 3:41 PM
To: Ronald Mendes
Cc: Gino Cresta
Subject: Traffic Study Committee - Handicap Parking Request
Attachments: 2016_0818 - Humphrey St Improvements - HP Recommendations.pdf

Ron,

In preparation of the striping of parking spaces along Humphrey St, we need to finalize which spaces will be handicap spaces. The Disability Commission discussed with me a request for some additional spaces. If the Traffic Study Committee could meet soon and review this and then let Gino know your final decision on new spaces as well as converting the space in front of Nguyen's back to a normal space – we'll then be able to schedule the striping work.

Attached is the street plan with parking spaces marked out. On the plan sheets, I've marked the following:

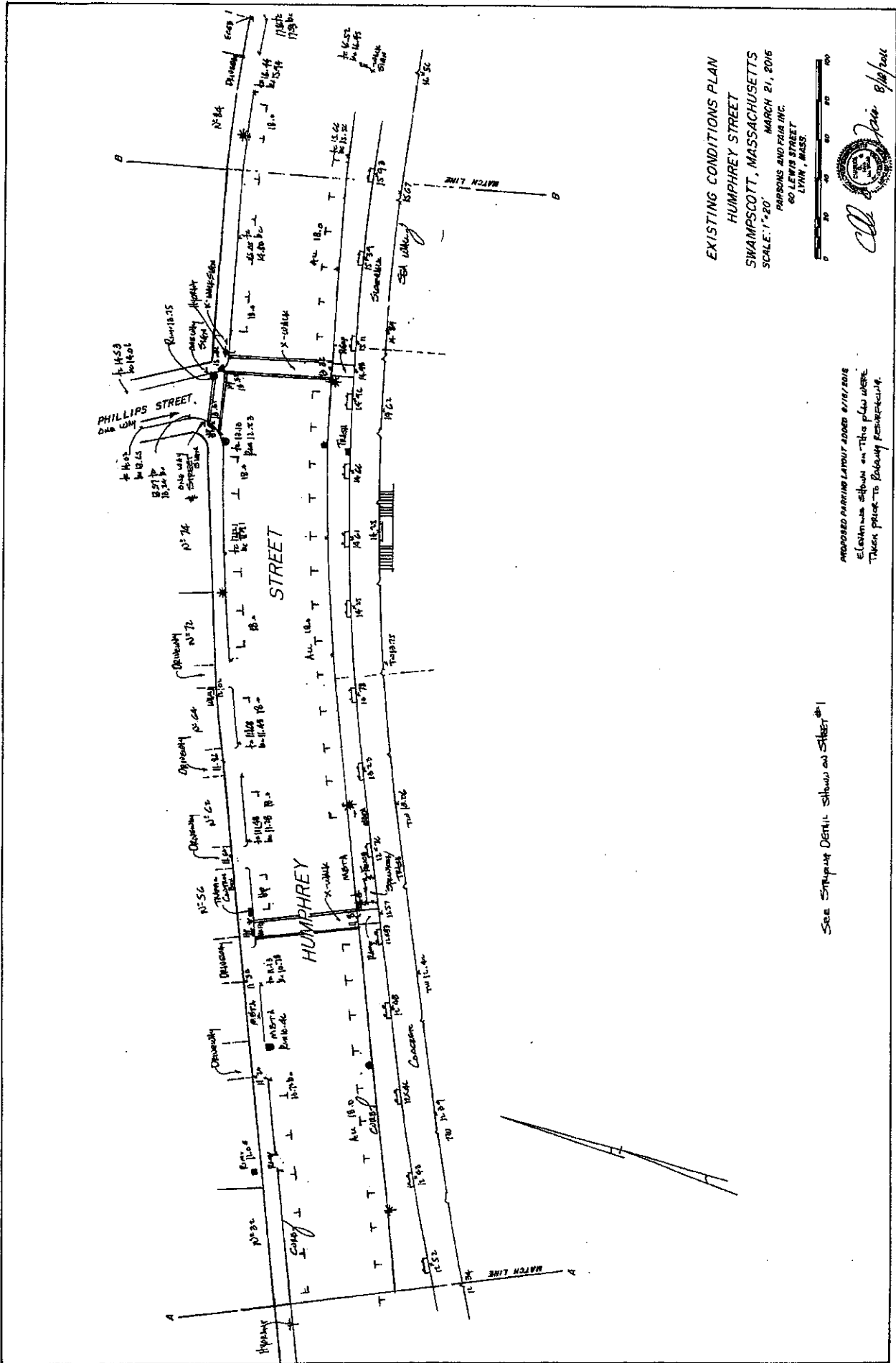
- Green = existing handicap spaces prior to the repaving project
- Blue/Green = existing handicap space that we'd like to convert to standard parking (Disability Commission was in favor of this)
- Blue = potential new handicap spaces

In total, the Disability Commission asked for four new handicap spaces along the stretch between the Lynn line and Fish House which are:

- In front of Mission on the Bay (I've marked a location I think could work)
- In front of Lincoln's Landing (I didn't mark this because a space there would be in close proximity to the St. John's HP space as well as the Mission HP space – but Traffic Study Committee should discuss)
- In front of G Bar (I've marked it in front of Dr. Linky's so that the space isn't mid-block)
- Additional space at Fisherman's Beach (I didn't mark this as there's already one on street by Fisherman's Beach and two others in the Fish House parking lot)

S. Peter Kane, LEED Green Associate
Director of Community Development

Town of Swampscott | 22 Monument Ave, Swampscott, MA 01907
(office) +1 781.596.8829 | (mobile) +1 617.595.7000
(email) pkane@town.swampscott.ma.us | (twitter) @planSWAMPSCOTT
www.town.swampscott.ma.us | www.planswampscott.com



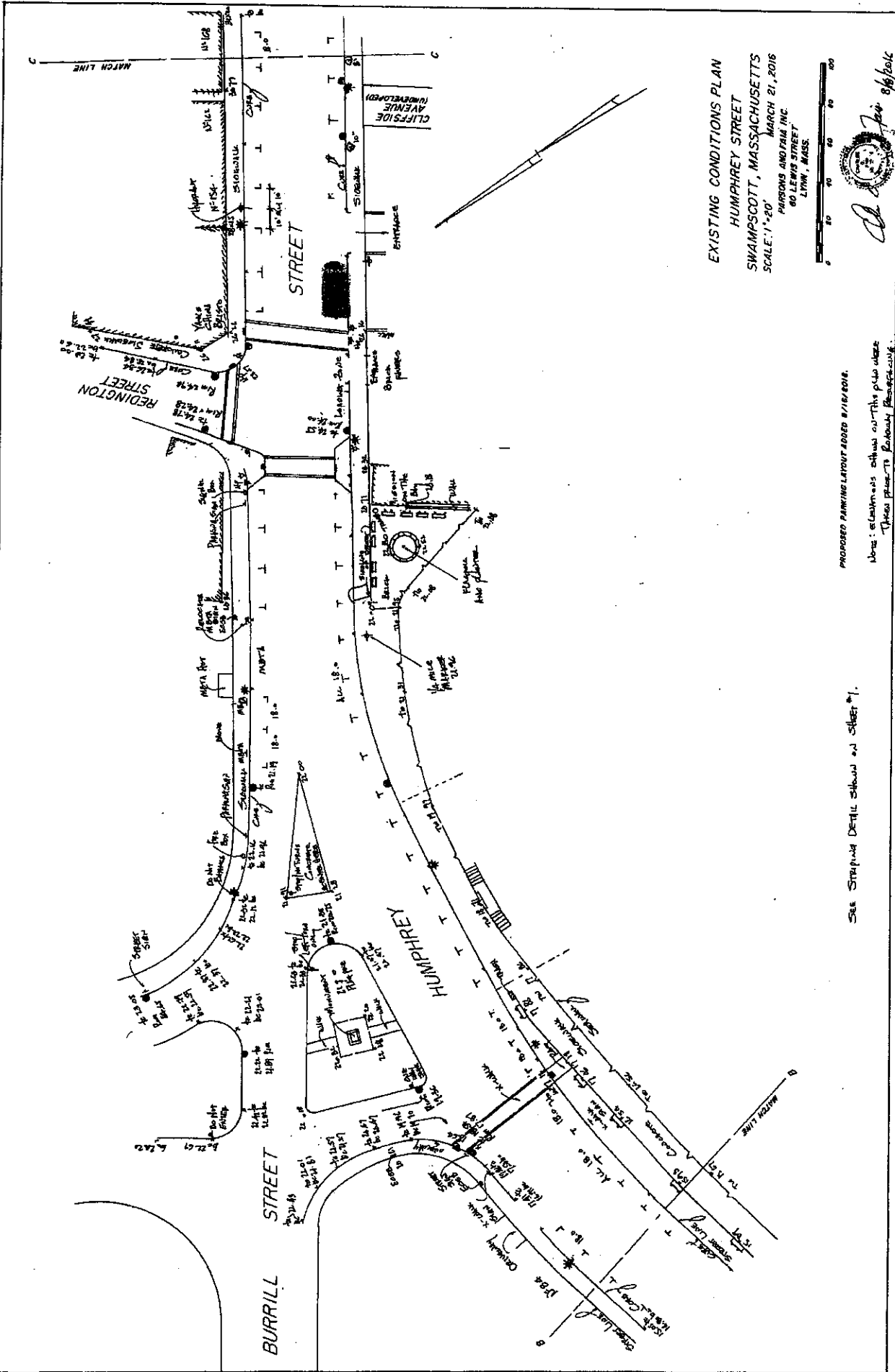
EXISTING CONDITIONS PLAN
 HUMPHREY STREET
 SWAMPSCOTT, MASSACHUSETTS
 SCALE: 1"=20'
 PARSONS AND PAIR INC.
 60 LEWIS STREET
 LYNN, MASS.



PROPOSED PARKING LAYOUT ABOVE 4/16/2016
 ELEVATION SHOWN ON THIS PLAN WERE
 TAKEN FROM THE BOSTON REGISTER.

SEE SURVEY DETAIL SHEET 101

C. J. [unclear]
 6/16/2016

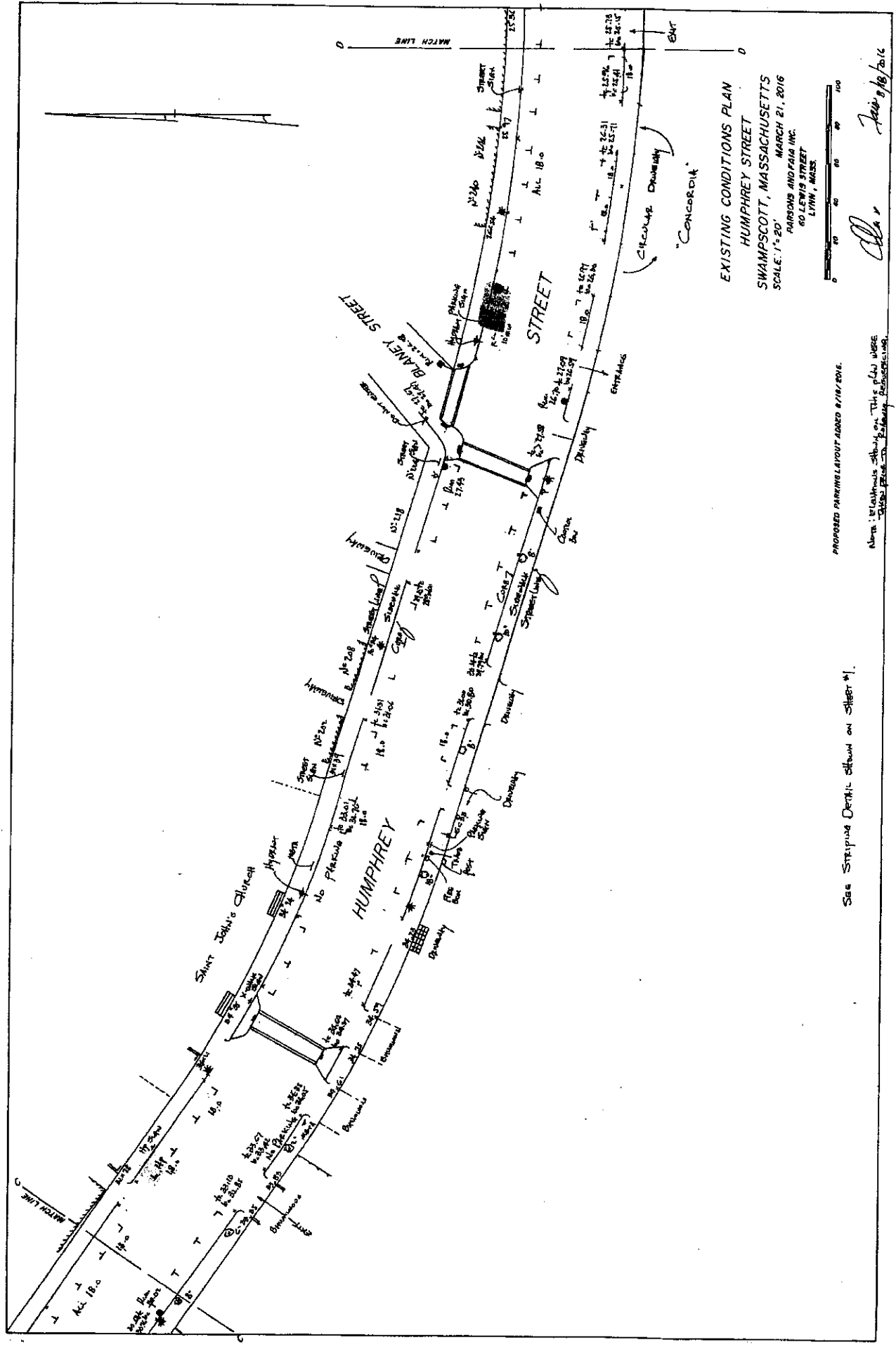


EXISTING CONDITIONS PLAN
 HUMPHREY STREET
 SWAMPSCOTT, MASSACHUSETTS
 SCALE: 1"=20'
 MARCH 21, 2016
 PARSONS AND PAUL INC.
 80 LEWIS STREET
 LYNN, MASS.



PROPOSED PARKING LAYOUT ADDED 8/16/2016.
 Note: dimensions shown on this plan were taken from the existing photographs.

See STRIPING DETAIL shown on sheet #1.



EXISTING CONDITIONS PLAN
 HUMPHREY STREET
 SWAMPSCOTT, MASSACHUSETTS
 SCALE: 1" = 20' MARCH 21, 2016
 PARSONS AND PALM INC.
 60 LEWIS STREET
 LYNN, MASS.

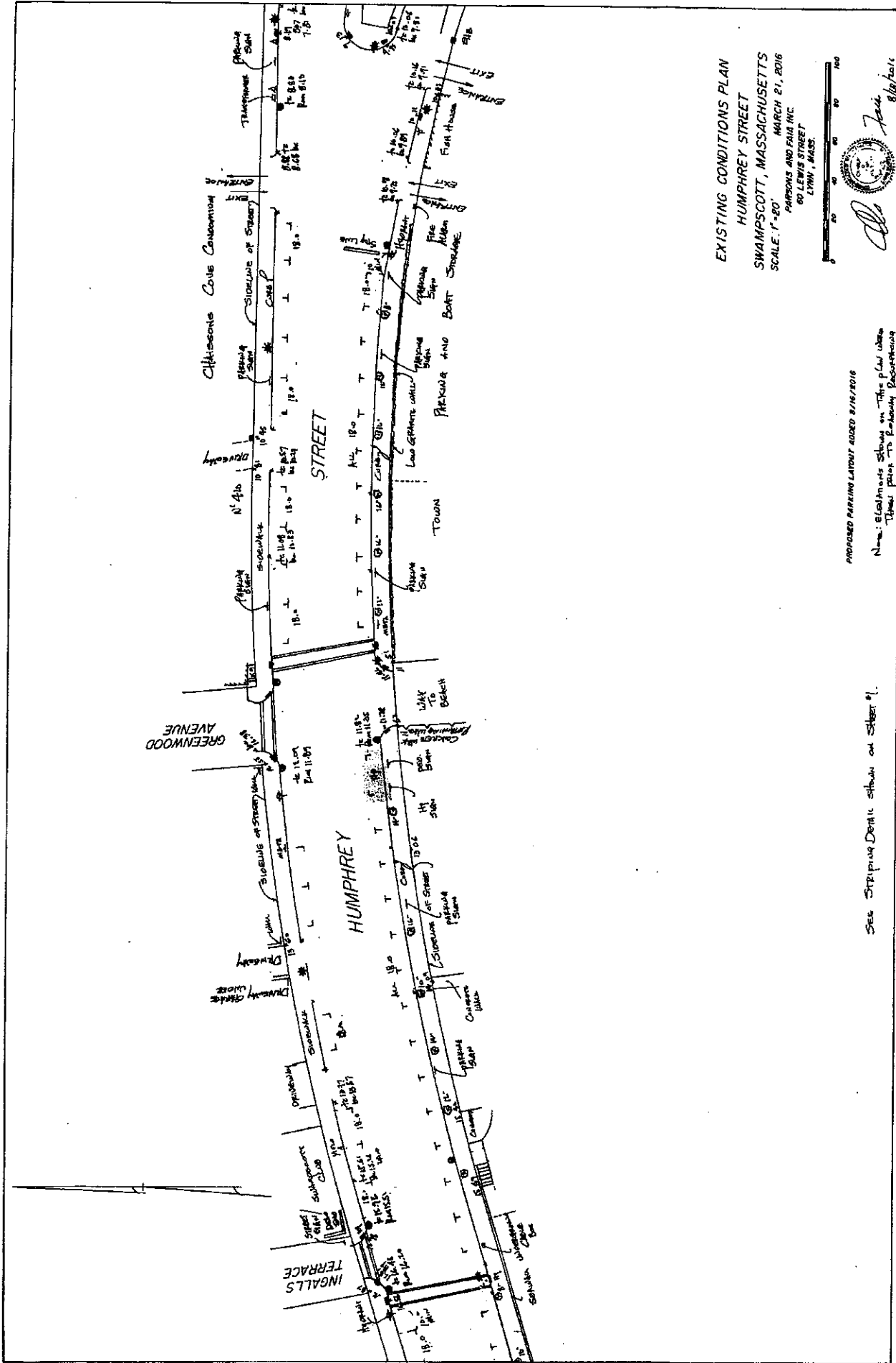


Alan *April 19, 2016*

PROPOSED PARKING LAYOUT ADDED 8/16/2016.

Note: Blackouts shown on this plan were added based on existing restrictions.

See Striping Detail shown on sheet 01.



EXISTING CONDITIONS PLAN
 HUMPHREY STREET
 SWAMPSCOTT, MASSACHUSETTS
 SCALE: 1"=20'
 MARCH 21, 2016
 PARRONE AND PAID INC.
 80 LEWIS STREET
 LYNN, MASS.



PROPOSED MARKING LAYOUT ADDED 2/16/2016
 Name: Elizabeth Shaw on this plan when these prior to Building Restrictions

See Striping Detail sheets on this plan when these prior to Building Restrictions